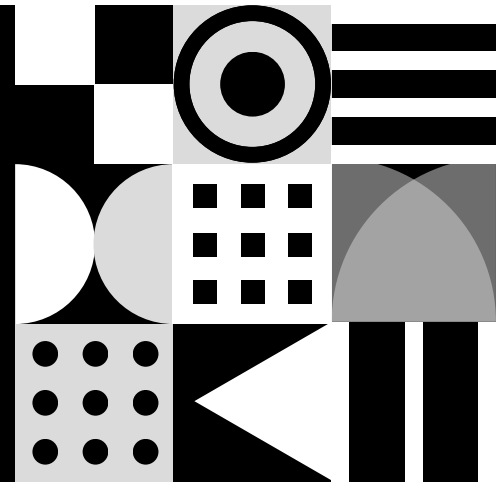


Finding Ways to Support Students Fighting Addiction



Katherine Baldwin

Table of Contents

Introduction

Key Findings

Implications for Practice

Conclusion

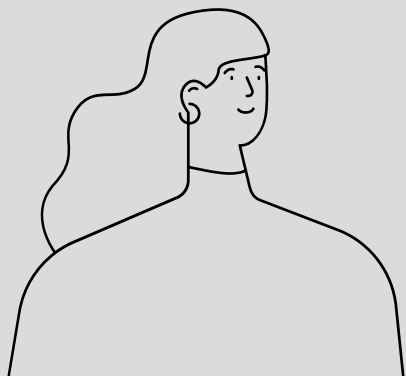
Introduction

Substance use disorders among college students represent a significant public health concern, and recovery communities tailored to this demographic have gained traction as a means of providing essential support. This research brief synthesizes the findings of three qualitative action research studies that explore the development, challenges, and outcomes of college-based recovery communities. These studies highlight the ways in which recovery programs can help students overcome addiction while continuing their academic journey, as well as the obstacles institutions face in implementing and sustaining such programs. The studies reviewed are:

1. Baker, A.K. (2015) - *Establishing College-Based Recovery Communities: Opportunities and Challenges Encountered*.
2. Beaty, J. (2014) - *A Recovery Group for Alcohol and Drug Addicted College Students*.
3. Ramirez, J. (2017) - *A Recovery Group for Substance Abusing College Students: Master's Thesis*.

Together, these studies provide valuable insights into the role of peer support, the integration of academic and emotional assistance, and the barriers to creating successful and sustainable recovery programs on college campuses.

Research Brief



The College Recovery Program has many benefits, and the qualitative data points to changes that will benefit patients.



Key Findings

01 | The Role of Peer Support

As highlighted by all three studies, students in recovery **benefit greatly from peer support**. This means having support of those that are in similar experiences. Having peer support helps to reduce the feelings of isolation and creating a sense of belonging. Which plays a central role in **fostering a supportive environment**, which a student can share their struggles as well as their triumphs. According to Beaty (2014), peer support groups not only improve emotional well-being but also provide **practical strategies for overcoming challenges**.

03 | Stigma and Campus Climate

Despite the positive impact of recovery communities, **stigma surrounding substance abuse** continues to be a barrier to their success. All three studies identify stigma as a persistent challenge that **hinders student engagement in recovery programs**. Students often face negative perceptions from peers, faculty, and administrators, which can lead to feelings of shame and reluctance to seek help. As noted by Baker (2015), creating a supportive campus environment that **promotes understanding of addiction and recovery** is essential for reducing stigma and encouraging participation in recovery initiatives.

02 | Integration of Academic and Recovery Support

A common theme across these studies is the need to integrate academic support alongside recovery services. Recovery programs that **combine counseling and emotion support with academic mentoring** and time management strategies, help students manage both sobriety and their academic responsibilities. Ramirez (2017) and Baker (2015) both found that students who received a holistic support system were more likely to **remain engaged in their studies and sobriety**.

04 | Resource Constraints

A common issue highlighted in the studies is the **lack of sufficient resources** to sustain recovery programs. Whether through limited funding, staffing shortages, or inadequate space, many recovery communities **struggle to maintain their operations**. Beaty (2014) suggests that securing sustainable funding, perhaps through partnerships with local organizations or grant opportunities, is critical to ensuring the **longevity of recovery programs**.

Implications for Practice

The findings from these studies have several important implications for practice, particularly for

colleges and universities aiming to establish or strengthen recovery programs for students.

01 **Establish Comprehensive, Integrated Recovery Programs**

Recovery programs should offer a holistic support model that **integrates academic and emotional assistance**. By combining peer support groups with academic mentoring, time management workshops, and counseling services, universities can provide students in recovery with the tools they need to maintain a sober and successful life. This integrated approach ensures that students' **needs are addresses on multiple fronts**, which improve both retention and recovery outcomes.

02 **Reduce Stigma Through Campus-Wide Education**

To foster a **more supportive environment** for students in recovery, it is essential to reduce stigma surrounding substance use disorders. Colleges should **implement educational campaigns** and training for faculty, staff, and students to **raise awareness of addiction, recovery**, and the challenges students in recovery face. As Baker (2015) suggests, creating an **environment that prioritizes inclusivity** and understanding will assist students feel more **comfortable engaging in recovery programs**. This helps relieve students of possible fear of judgement/discrimination.

03 **Secure Sustainable Funding and Resources**

Institutions must **prioritize securing funding** for recovery initiatives to ensure they are sustainable. This may involve **seeking grants, partnering with local organizations, and advocating for university funding**. Additionally, integrating recovering services into student support services that already exist, can reduce costs and ensure more efficient use of resources.

04 **Promote Faculty and Administrative**

Engagement

Faculty and administrators play a crucial role in supporting students in recovery. Universities should offer training to help **faculty understand the challenges students in recovery face** and encourage them to **provide flexible accommodations** where needed. Administrative support is also critical in securing resources and **advocating for policies** that promote student success in recovery.

05 **Develop Flexible Programs to Meet Diverse Needs**

Recovery programs should be **adaptable to the varying needs** of students, recognizing that each individual's recovery journey is unique. Offering flexible schedules for **group meetings, providing online options** for remote students and **tailoring recovery plans** to individual students' academic and personal circumstances can **enhance engagement** and **reduce the risk of dropout**.

Conclusion

The research on college-based recovery communities provides compelling evidence that these programs play a vital role in supporting students with substance use disorders. Peer support, integrated academic and recovery services, and a campus environment that reduces stigma are critical components of successful recovery initiatives. However, challenges such as limited resources, stigma, and the need for long-term support persist. To overcome these barriers, colleges and universities must prioritize the integration of recovery services into campus life, secure sustainable funding, and foster an inclusive, stigma-free campus environment. By doing so, institutions can help students in recovery achieve academic success and personal growth, contributing to their overall well-being and future success.

References

Baker, A. (2010). Establishing College-based recovery communities: Opportunities and challenges encountered. *Substance Abuse Recovery in College*, 145–158. https://doi.org/10.1007/978-1-4419-1767-6_9

Beaty, J. (2015). *A Recovery Group for Alcohol and Drug Addicted College Students* (Order No. 1601042). Available from ProQuest Dissertations & Theses A&I; ProQuest Dissertations & Theses

Global. (1733633977). <https://www.proquest.com/dissertations-theses/recovery-group-alcohol-drug-addicted-college/docview/1733633977/se-2>

Ramirez, J. (2012). *A recovery group for substance abusing college students*. Saint Mary's College of California.

We thank you for your continued support in our efforts to contribute to the CRP.

To cite this: Baldwin, K. (2024). Research Brief: Finding Ways to Support Students Fighting Addiction. From Shore, C. D., et al. (2024). *Descriptive Database for Literature on Collegiate Recovery Programs 1972-Present*. *Living Literature Review for the Association of Recovery in Higher Education (ARHE)*. Retrieved from <https://collegiaterecovery.org/research-database/>